

my FLOOR

COLLECTION 2022

Made in
Germany



Selected decors now
with special **MOISTURE
PROTECTION.**

Decor overview	4
Moisture protection	7
Interview with Conrad Huhn	8
Environment	11

MY FLOOR Collection

<i>Lodge</i>	12
COTTAGE	20
<i>Chalet</i>	32
Villa	40
Residence	48
Accessories	58

Collection 2022

When elegance meets rustic nonchalance and nautical style meets La Dolce Vita in a stylish, feel-good atmosphere with a solid practicality – and the choice is yours!

The MY FLOOR Collection 2022 unites elegant design and the authentic look of real wood with the advantages of a top-quality, modern laminate floor. It is tough, low-maintenance and durable. Whether you prefer the feel of life by the sea or the urban elegance of a town house, MY FLOOR has just the floor to make you feel good, without compromise on quality or appearance.

Our decors are original and, in the truest sense of the word, sublime. The different surface structures promise variety. Our decorative imprints create an authentic wood-look which is second to none. All floors from MY FLOOR are extremely durable and have the highest abrasion class rating.

For the sake of the environment, we source our wood from sustainable forests. All of our products are made from natural, renewable raw materials and low-pollution wood-based materials. We keep the manufacturing chain lean and efficient: our energy management is certified and particularly resource-saving.

And now: you can enjoy the new MY FLOOR Collection 2022 and be inspired by our living styles.

Made in 
Germany

pp. 12-19

Lodge

M8015

16

M8086

16

M8087

16

M8088

17

M8089

17

M8112

15

NEW

pp. 20-33

COTTAGE

MV806

24

MV807

24

MV808

24

MV854

25

MV855

25

MV865

25

MV896

26

MV898

26

MV8110

26

NEW

MV8111

23

NEW

MV820

27

MV821

27

MV839

27

MV849

28

MV851

28

MV852

28

MV856

29

MV857

29

MV867

29

MV895

30

MV899

30

MV8112

30

NEW

pp. 34-39

Chalet

M1002

36

M1005

36

M1008

36

M1019

37

M1020

37

M1021

37

M1022

35

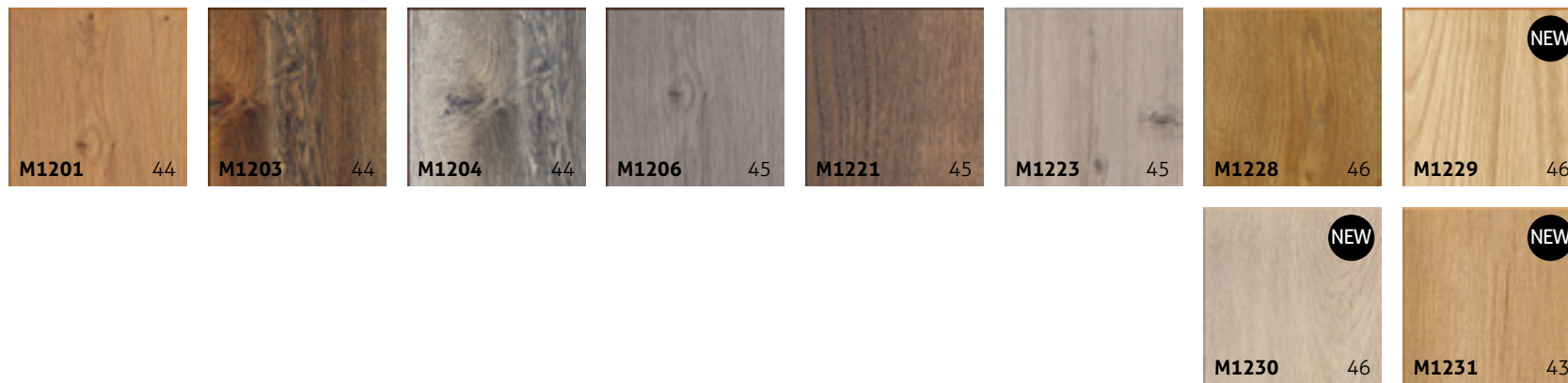
M1023

38

NEW

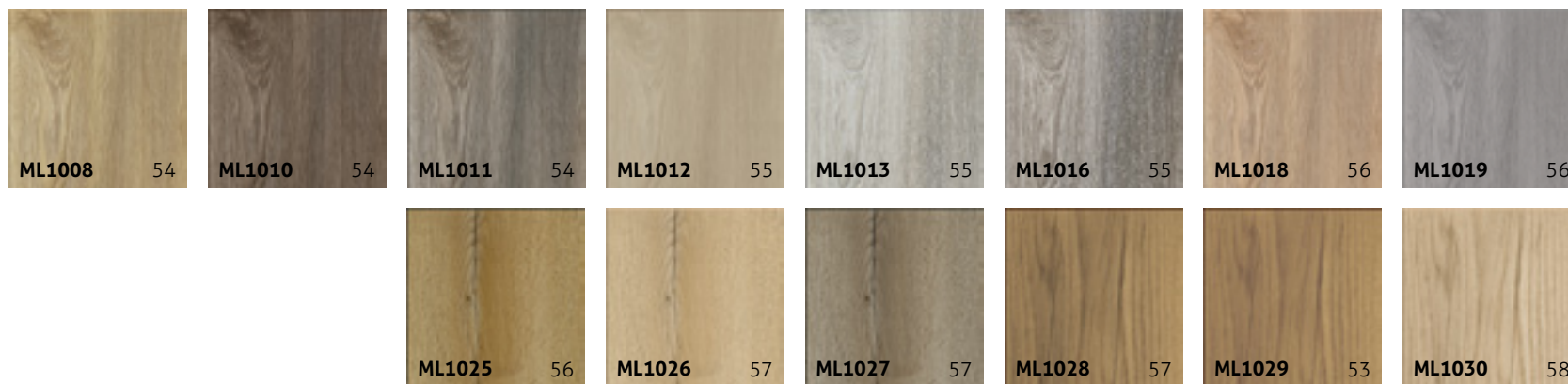
NEW

NEW



Villa

pp. 40-47



Residence

pp. 48-59





Our moisture protection

We have made the best even better: high-quality décors from the Chalet, Villa and Residence laminate collections have been optimised in order to withstand moisture penetration even longer. The resin-rich pine from Mark Brandenburg forest and special gluing processes ensure significantly reduced swelling of the laminate flooring.



The natural product is particularly suitable for children and pets who are in frequent contact with the laminate flooring. It can easily forgive a mishap or two.



Laminate flooring is usually to be cleaned by means of a damp wipe.
The floors with moisture protection can be easily cleaned with a damp mop.



Like all wood-based products, this laminate flooring will react to the moisture and expand or contract accordingly. Although designed for improved resistance to water and moisture, it is not waterproof and excessive wetting and standing water should be avoided.

Suitable for rooms with high humidity.

Not suitable for outdoor areas, rooms with permanently high moisture load, e.g. shower cubicles, saunas and rooms with floor drains.

An eye for detail and the big picture

Conrad Huhn has been at SWISS KRONO TEX for 26 years and as Flooring Production Manager, he and his team ensure that production runs smoothly in the manufacture of MY FLOOR floors. He gave us a brief glimpse of his average day:

As Production Manager, you must have a lot to coordinate and so much to keep an eye on. What does this all consist of for you?

We produce between 170,000 m² and 215,000 m² of floors every day; that's an impressive quantity of ecologically sustainable floors for healthy living. 7 floor production systems alone have to be coordinated for the various products. Added to this, there is tool management and tool technology. In addition, goods inwards and inventory management for semi-finished and finished goods must of course be monitored. Our team consists of 130 employees. As a result, everything is very well coordinated.

There's a fairly broad range of different laminate flooring – MY FLOOR alone has 5 different collections of varying lengths, thicknesses and widths. How do you manage the many different orders from all round the world?

The available capacity required to supply our customers has to be continuously coordinated with Sales. The major task is to find a cost-effective balance between the needs of customers and the optimisation of processes. It's a constant challenge not to lose the necessary flexibility, and this keeps us on our toes. By optimising processes, we were able in the last few years to steadily boost the efficiency of the 7 floor production systems.

Every one of our 7 floor production systems has its specific technical characteristics – e.g. specialising in entry level products up to 8 mm or suitable for additional product finishing with footfall sound insulation film, products with and



The daily variety and new challenges associated with the development of new technologies and man management are exciting. It's gratifying to be able to pass on my accumulated experience.

Conrad Huhn

without V-shaped joints, special varnish or for especially thick, long or wide panels, etc. This enables us to respond quickly and flexibly to different customer requests and orders and to offer such a large variety of floors.

So what production steps are required to make a panel?

Round timber from sustainably managed forests is processed into wood fibre and then pressed to form high-density fibreboard (HDF) using a small amount of formaldehyde-free adhesive. The decor is either attached to this substrate or printed directly onto it. Then the panel is sealed with melamine and given a surface texture. These large-format, semi-finished products are then cut to blanks on the panel saws. The profile is then milled to the specified length and width with a special varnish applied to the edge to match the decor, and, if necessary, the floor is given footfall sound protection – depending on the product.

There's a nice illustration of the structure of a panel at the end of this brochure. The automated quality control of the panels is of course very important at the end, before they are packaged.

And now for a few more figures please: What can your floor production systems manage per month on average?

On all 7 of our floor production systems, the material is changed 950 times a month and the decor 690 times. The thickness is changed 50 times a month, the colour of the V-shaped joint 250 times and the profile 23 times. So there's no danger of boredom setting in with us.



And without compromise to the environment!

MY FLOOR has made a voluntary commitment to full transparency. This means that we take the environmental sustainability of our products as seriously as maintaining the highest standards of quality and giving outstanding value for money.

Our environmental policies focus on ecological efficiency – for the whole life cycle of any given product that leaves our factory. We process certified raw materials sourced from sustainably managed forests and check the environmental impact of every stage of production. We produce high-quality and very long-lasting laminate flooring, and also take care of eco-friendly disposal. Our Environmental Product Declaration (EPD) makes information on the environmental credentials of our wood-based products freely available. The EPD is awarded by the Institut Bauen und Umwelt and is an internationally recognised ecolabel in accordance with ISO 14025.

And because we want to keep things this way, we give our staff regular training in awareness and knowledge of environmental matters. We are always striving for better – for you and for our environment. As a result, we are proud to have been awarded Blue Angel environmental certification.





Lodge

Waves rushing. Fresh sea air surrounds you. The sun warms the tip of your nose. Immediately you begin to relax ... Bring that beach holiday feeling into your home with the MY FLOOR Lodge Collection.

The decors in the Lodge Collection look natural and rustic. They exude pure love of life. As free and happy as a day at the beach. Whether light, dark or casual tile design, our designs are extremely diverse. Finding it difficult to make up your mind? Even better, our decors can also be easily combined and harmonise perfectly with one other.

Dimensions: 1,380 mm × 193 mm

Decors: 6

Panels per carton: 8 = 2.131 m²

Cartons per pallet: 56 = 119.32 m²

8 mm | AC5/32







NEW

Wild
Lodge | M8112 | AF | 1-Strip

Oak Silver

Lodge | M8015 | MX | 1-Strip

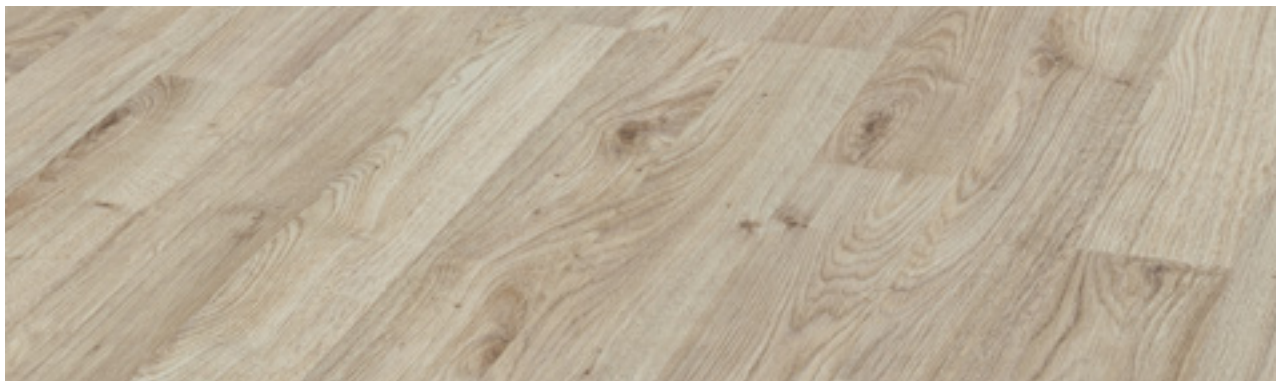
**Mailand Oak**

Lodge | M8086 | AF | 3-Strip

**DaVinci**

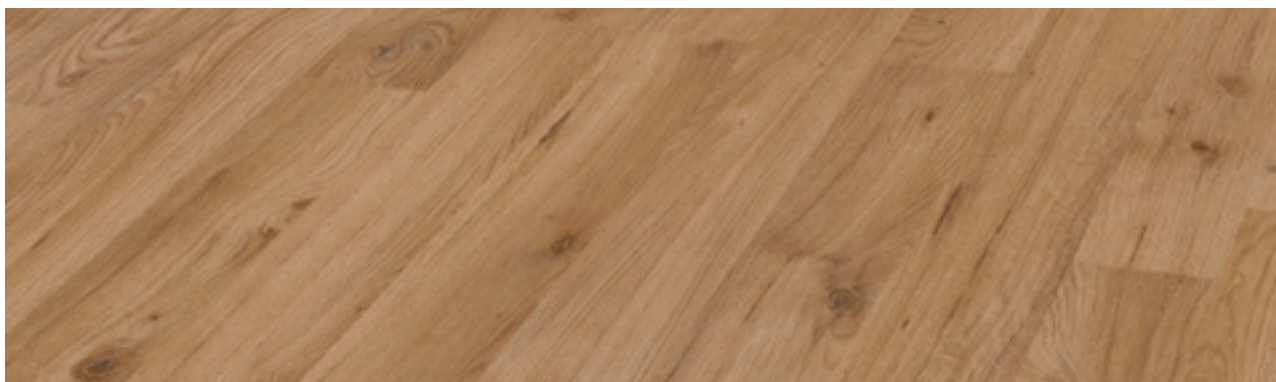
Lodge | M8087 | UL | 1-Strip





Scala Oak

Lodge | M8088 | AF | 2-Strip



Rialto Oak

Lodge | M8089 | AF | 2-Strip





Lodge — M8112 Wild



COTTAGE

A glass of wine, a good book, a cosy fire crackling in the fireplace. What more do you need for a peaceful end to the day? The flickering of the fireplace bathes the room in a beautifully warm light. Your new floor from the MY FLOOR Cottage Collection shimmers subtly and its embossed grain is fine and elegant. This will make you long for the evening, every day anew ...

All Cottage Collection floors exude an incomparable sense of comfort and are full of character. An effect that could only be matched by solid wood floors. And, if a small spark jumps out of the fire, it's no problem at all. Our laminate floors are flame-retardant and hard-wearing.

Page 22–26

Dimensions: 1,380 mm × 193 mm

Decors: 10

Panels per carton: 8 = 2.131 m²

Cartons per pallet: 56 = 119.32 m²

Page 27–30

Dimensions: 1,380 mm × 244 mm

Decors: 12

Panels per carton: 8 = 2.694 m²

Cartons per pallet: 42 = 113.138 m²

8 mm | AC5/32







NEW

Ballroom

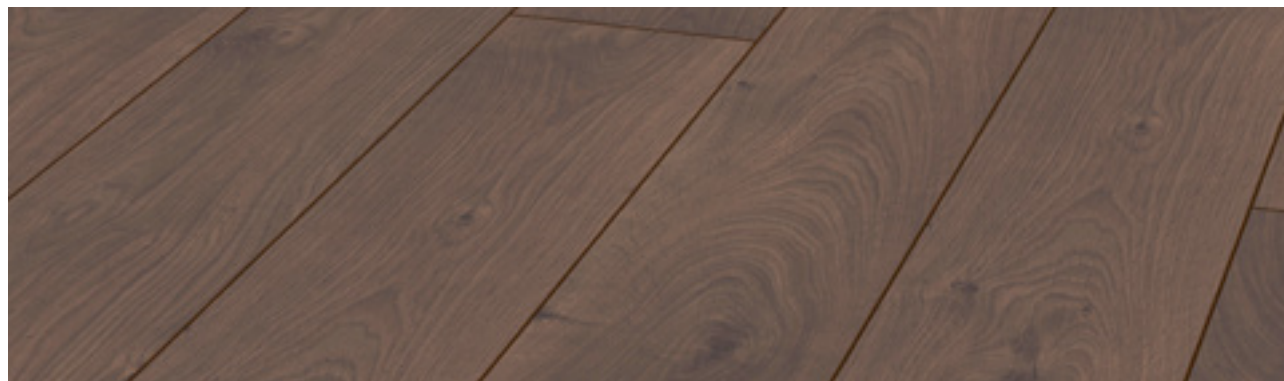
Cottage | MV8111 | AF | 3-Strip

Pallas Oak Nature

Cottage | MV806 | ER | 1-Strip

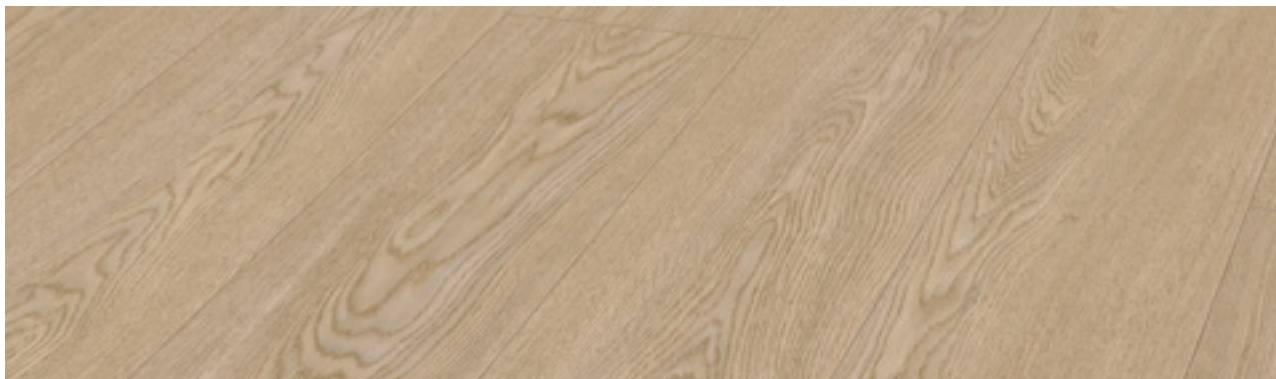
**Atlas Oak**

Cottage | MV807 | ER | 1-Strip

**Atlas Oak Beige**

Cottage | MV808 | ER | 1-Strip





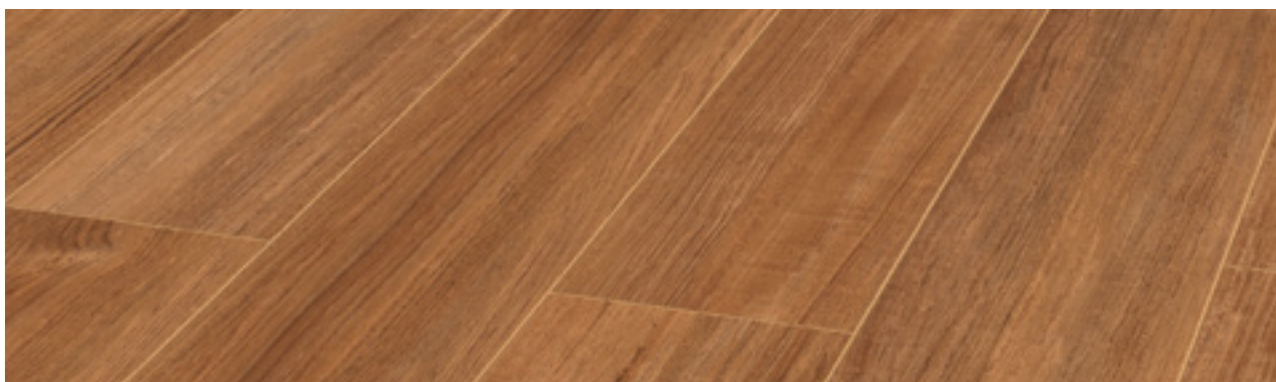
Turin Oak

Cottage | MV854 | AF | 1-Strip



Colour Oak

Cottage | MV855 | UL | 1-Strip



Bali Teak

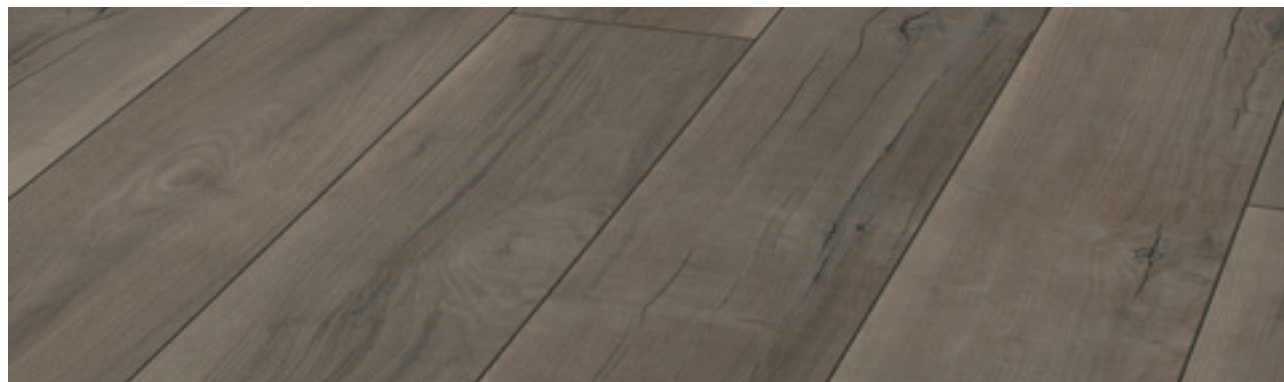
Cottage | MV865 | AF | 1-Strip

Nevada Oak Silver

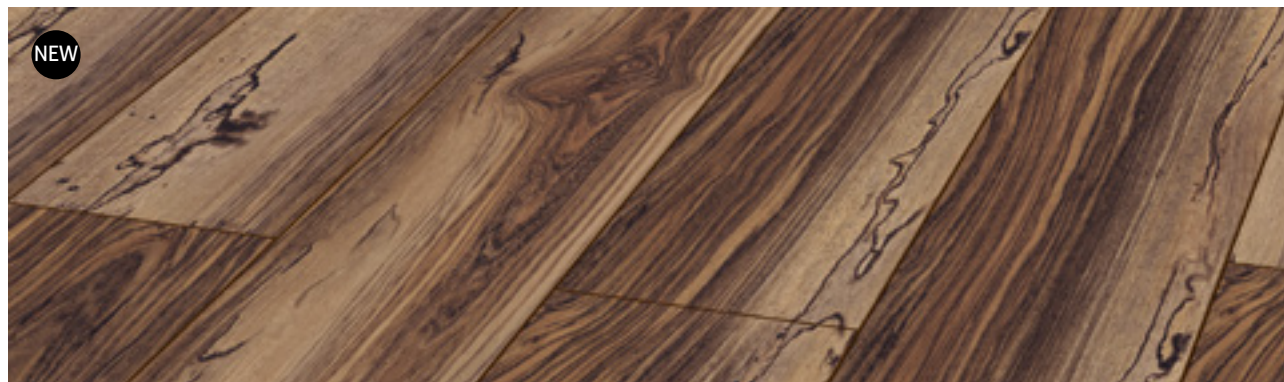
Cottage | MV896 | ML | 1-Strip

**Zermatt Walnut**

Cottage | MV898 | ML | 1-Strip

**Mango**

Cottage | MV8110 | ML | 1-Strip





244 mm

Harbour Oak

Cottage | MV820 | ER | 1-Strip



244 mm

Harbour Oak Grey

Cottage | MV821 | ER | 1-Strip



244 mm

Harbour Oak Beige

Cottage | MV839 | ER | 1-Strip

Palmer Spruce

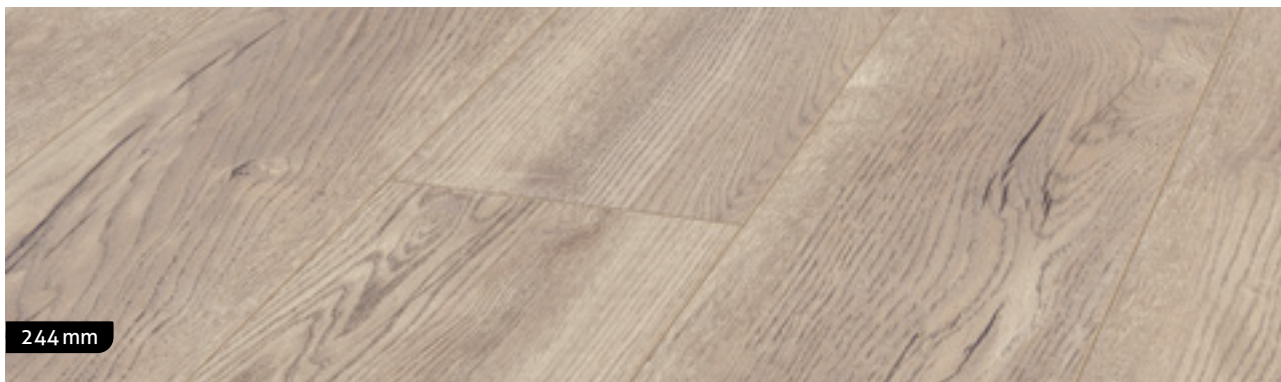
Cottage | MV849 | UL | 1-Strip

**Pettersson Oak Grey**

Cottage | MV851 | ER | 1-Strip

**Pettersson Oak Beige**

Cottage | MV852 | ER | 1-Strip





244 mm

Montmelo Oak Nature

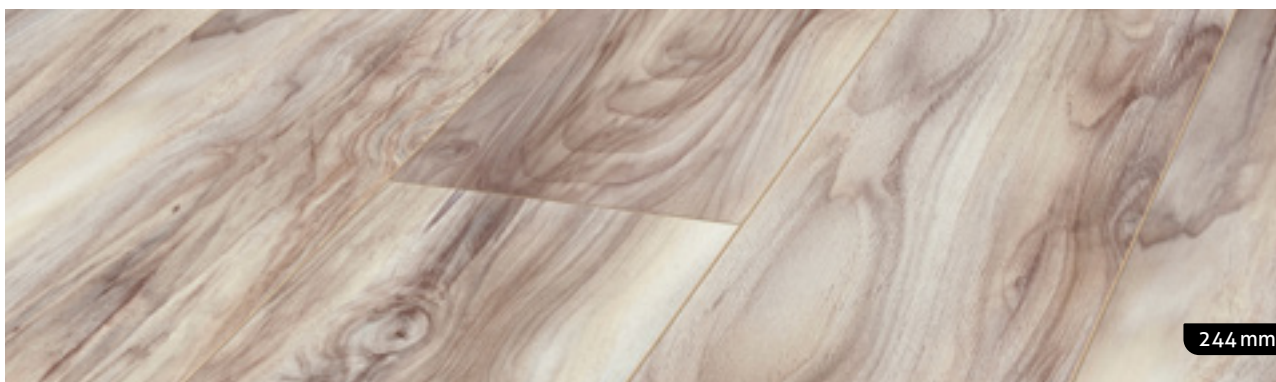
Cottage | MV856 | ER | 1-Strip



244 mm

Montmelo Oak Silver

Cottage | MV857 | ER | 1-Strip



244 mm

Kodiak

Cottage | MV867 | ML | 1-Strip

Tormes Oak

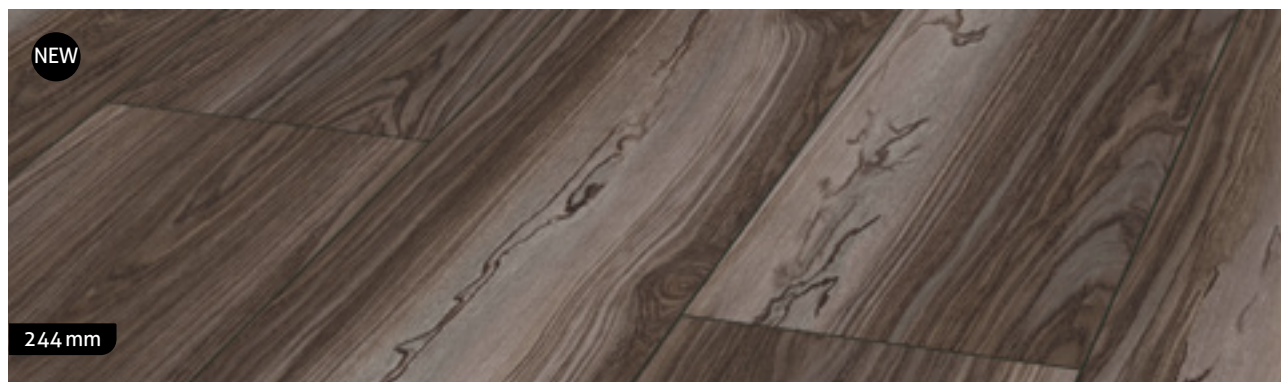
Cottage | MV895 | ML | 1-Strip

**Duero Oak**

Cottage | MV899 | ML | 1-Strip

**Mango Carbon**

Cottage | MV8112 | ML | 1-Strip





COTTAGE — MV8111 Ballroom



Chalet

Do you love the rustic alpine atmosphere? Up there in the mountains, everything seems just that bit easier and more original. Enjoying a hearty snack after a long hike. Telling stories until late in the evening and even enjoying a vigorous "Schuhplattler". The high-quality floor from the MY FLOOR Chalet collection takes it all in its stride. It is tough, hard wearing and even forgiving of dancing on the parquet, erm – laminate.

The decors of the Chalet Collection also create a rustic ambience in your home. Combine it, for example, with simple wood furniture, linen and leather, or dare to try an atmospheric mix of antique and modern furniture.

Dimensions: 1,380 mm × 193 mm

Decors: 8

Panels per carton: 6 = 1.598 m²

Cartons per pallet: 56 = 89.49 m²

10 mm | AC5/33*



* Minimum requirement for the underlay material is CS 60kPa and DL 2 according to EN 16354.





NEW

Arizona Oak Grey

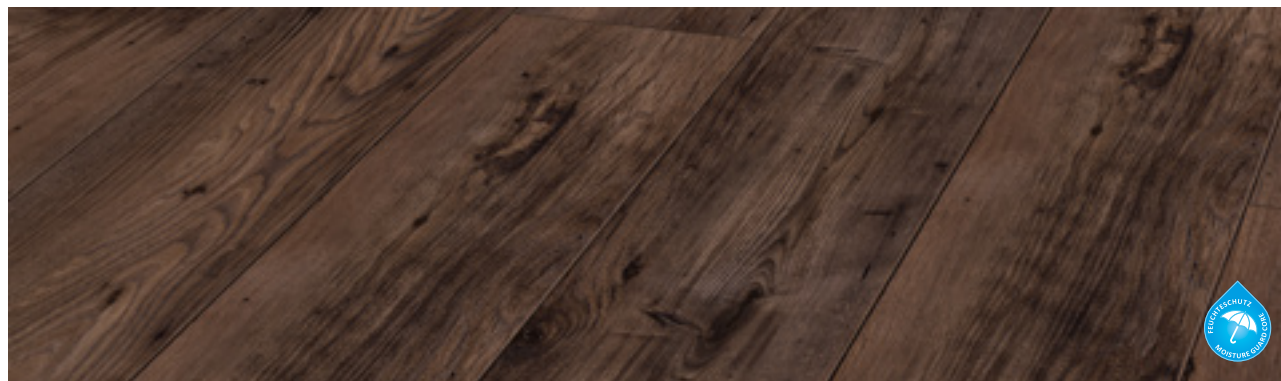
Chalet | M1022 | ND | 1-Strip

Chestnut Beige

Chalet | M1002 | ER | 1-Strip

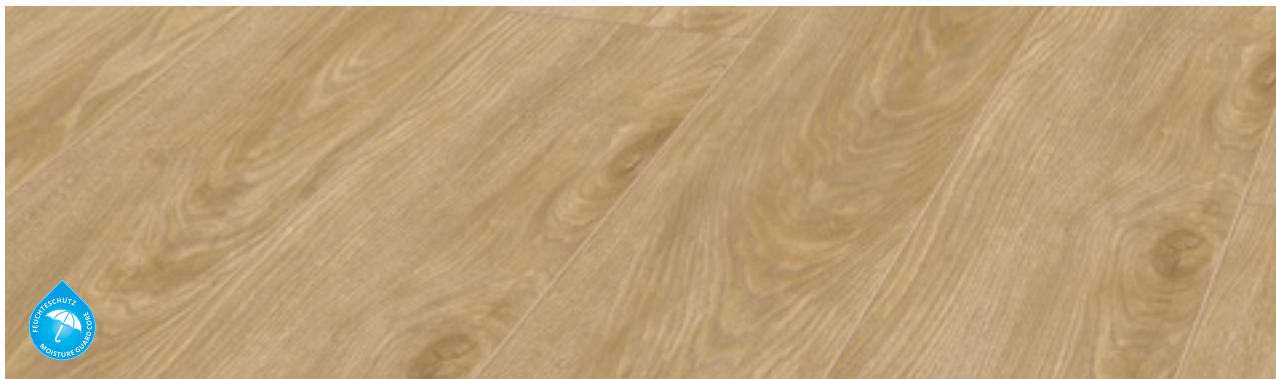
**Chestnut**

Chalet | M1005 | ER | 1-Strip

**Chestnut Nature**

Chalet | M1008 | ER | 1-Strip





Girona Oak

Chalet | M1019 | ER | 1-Strip



Valencia Oak

Chalet | M1020 | ER | 1-Strip



Elba Oak

Chalet | M1021 | ER | 1-Strip

NEW

Cinerea Beige

Chalet | M1023 | ND | 1-Strip



Chalet — M1022 Arizona Oak Grey



Chalet — M1022 Arizona Oak Grey



Villa

The villa has been perched on the small Tuscan hill for several centuries. It has seen a lot during this time: happy family celebrations, opulent dinners and romantic candlelight dinners. Its style has hardly changed over time – it has always been timelessly elegant. The MY FLOOR Villa Collection combines this classic elegance with understated glamour that effortlessly enhances every room.

Do you value exclusive quality? Allow yourself to be seduced by the noble wood look of the Villa Collection and create your own space with its stylish beauty. And don't forget that it also makes an impressive statement in a business setting.

Dimensions: 1,375 mm × 188 mm

Decors: 10

Panels per carton: 5 = 1.293 m²

Cartons per pallet: 56 = 72.38 m²

12 mm | AC5/33*



* Minimum requirement for the underlay material is CS 60kPa and DL 2 according to EN 16354.





NEW

Farm Oak Beige

Villa | M1231 | ND | 1-Strip

Atlas Oak Nature

Villa | M1201 | ER | 1-Strip

**Harbour Oak**

Villa | M1203 | ER | 1-Strip

**Harbour Oak Grey**

Villa | M1204 | ER | 1-Strip





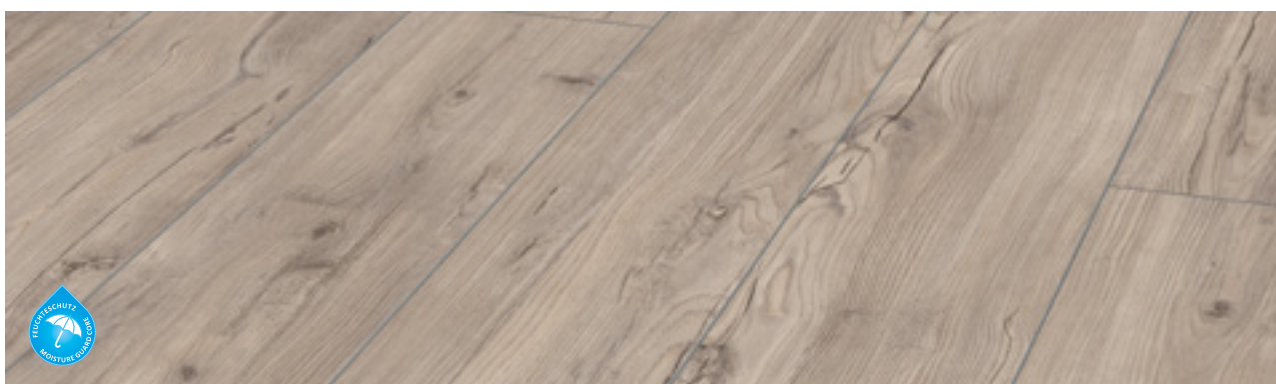
Timeless Oak Grey

Villa | M1206 | ER | 1-Strip



Pettersson Oak Dark

Villa | M1221 | ER | 1-Strip



Sauvignon Chestnut

Villa | M1223 | ER | 1-Strip

Bilbao Oak

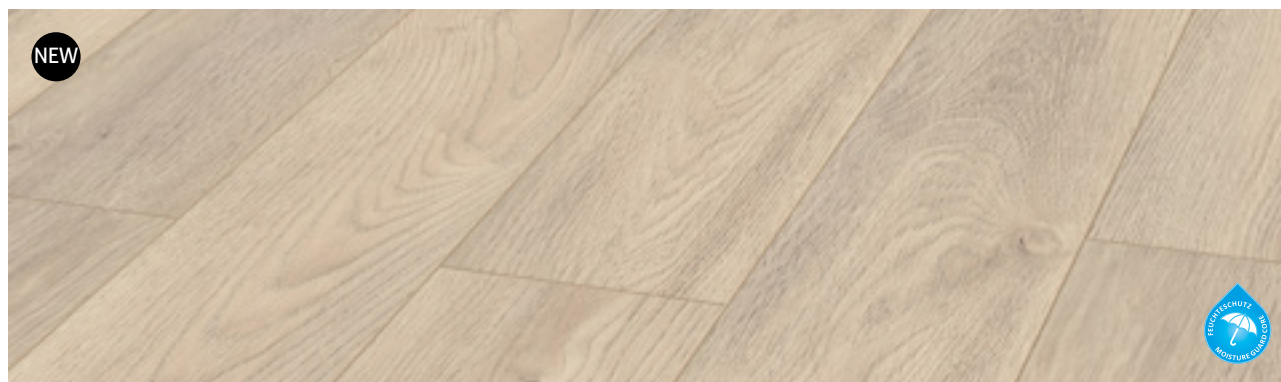
Villa | M1228 | ER | 1-Strip

**Virgin Chestnut**

Villa | M1229 | AF | 1-Strip

**Elba Oak Titanium**

Villa | M1230 | ER | 1-Strip



NEW

Our decor of the year 2022

Farm Oak Beige – M1231

Beauty at first sight. Since the beginning, what has made the authentic MY FLOOR collections so special is their lifelike authenticity. Farm Oak Beige, our Pattern of the Year, achieves this goal to perfection. The laminate flooring with a soft honey tone and the tactile “natural deep structure” has such an authentic overlay design that it cannot be distinguished from a solid wood floor by the naked eye.

Yet despite the distinctive cracks, scarring and stone inclusions on this exceptional design, it does not look rustic. Its Scandinavian simplicity effortlessly transforms a modern living space into an elegant, restful oasis full of stylish joie de vivre. Spacious. Sleek. Elegant. We have developed Farm Oak Beige from natural renewable raw materials for those who want to decorate their homes with nothing but simple beauty.





Villa — M1231 Farm Oak Beige



Residence

Say goodbye to the mundane. You will create an extraordinary ambience with our highlight: urban, stylish and graceful at the same time. Residence is our very special collection, our masterpiece. The extra wide and unusually long panels; the authentic, elegant, natural wood look and the excellent quality of this floor speak all for themselves.

Our MY FLOOR Residence Collection will thrill you. It lies in your room, exuding self-confidence, modernity and exclusivity. You won't just walk across the floor, no, you'll swagger. It goes without saying that the floors are robust, not light-sensitive and comfortable to walk on.

Dimensions: 1,845 mm × 244 mm

Decors: 14

Panels per carton: 4 = 1.80 m²

Cartons per pallet: 42 = 75.6 m²

10 mm | AC5/33*



* Minimum requirement for the underlay material is CS 60kPa and DL 2 according to EN 16354.





Residence Oak Nature
Residence | ML1029 | ER | 1-Strip

Makro Oak Nature

Residence | ML1008 | ER | 1-Strip

**Makro Oak Brown**

Residence | ML1010 | ER | 1-Strip

**Makro Oak Grey**

Residence | ML1011 | ER | 1-Strip





Makro Oak Light

Residence | ML1012 | ER | 1-Strip



Highland Oak Silver

Residence | ML1013 | ER | 1-Strip



Highland Oak Titanium

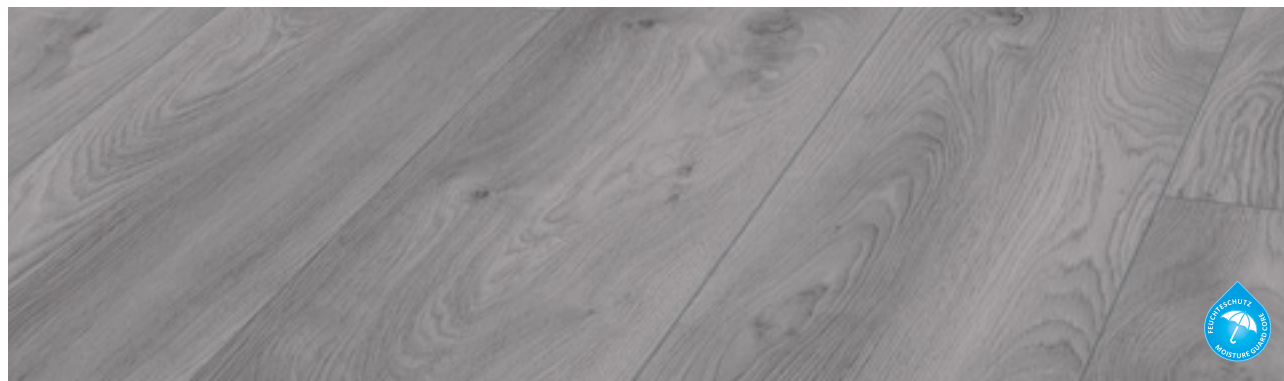
Residence | ML1016 | ER | 1-Strip

Makro Oak Beige

Residence | ML1018 | ER | 1-Strip

**Makro Oak Light Grey**

Residence | ML1019 | ER | 1-Strip

**Pilatus Oak**

Residence | ML1025 | ER | 1-Strip





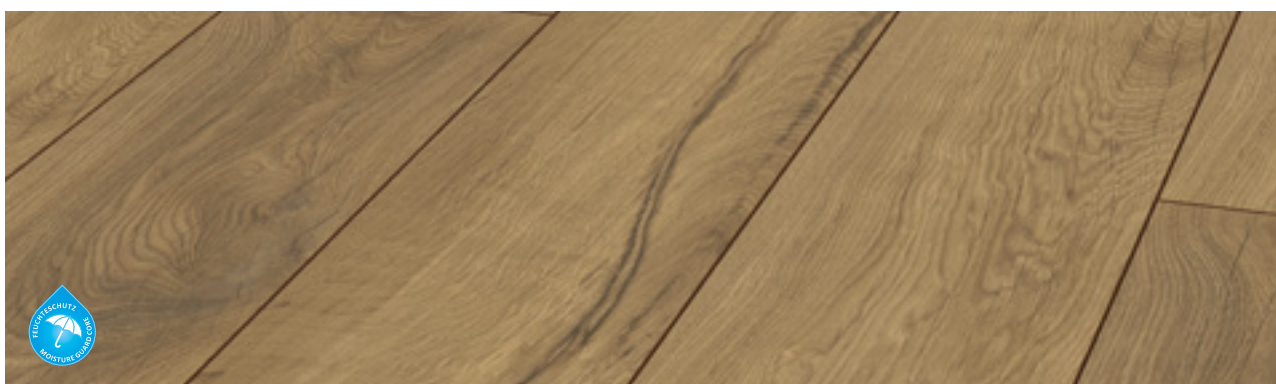
Pilatus Oak Gold

Residence | ML1026 | ER | 1-Strip



Pilatus Oak Titanium

Residence | ML1027 | ER | 1-Strip



Residence Oak Brown

Residence | ML1028 | ER | 1-Strip

Residence Oak Beige

Residence | ML1030 | ER | 1-Strip

**Residence** — ML1029 Residence Oak Nature

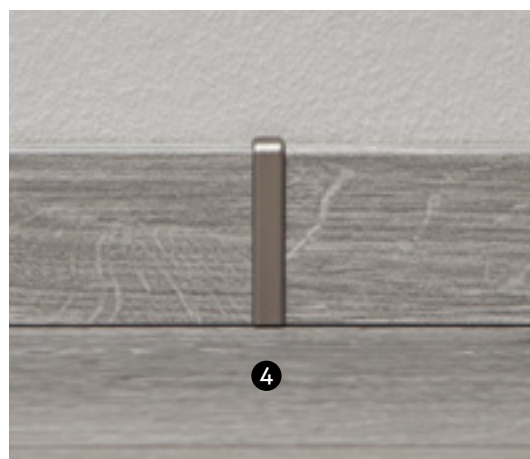


Residence — ML1029 Residence Oak Nature

Skirtings & accessories



SKIRTING BOARD KTEX 1
MDF, for attachment system
19 × 58 × 2,400 mm
PACKET 10 pcs
PALLET 56 packets



ACCESSORIES FOR SKIRTING BOARD KTEX 1

- ❶ External corner piece (2 pcs per packet)
- ❷ Internal corner piece (2 pcs per packet)
- ❸ End cap (1 × left and 1 × right per packet)
- ❹ Connector (2 pcs per packet)

BOX 10 packets

Available in these colours:
light brown, dark brown, white, silver and stainless steel look

Skirtings & accessories



KTEX F



SKIRTING BOARD KTEX F

MDF, white, chamfered, paintable

18 × 80 × 2,400 mm

PACKET 8 pcs

PALLET 35 packets



KTEX P



SKIRTING BOARD KTEX P

MDF, white, profiled, paintable

18 × 80 × 2,400 mm

PACKET 8 pcs

PALLET 35 packets



**CORNER
PIECE**

CORNER PIECE FOR SKIRTING BOARDS KTEX F AND KTEX P

22 × 22 × 82 mm

PACKET 2 pcs

Available in white decor.



**SKIRTING
BOARD
CLIPS**

Other skirtings



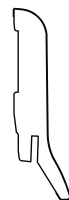
SKIRTING BOARD KTEX 5
MDF

15 × 70 × 2,400 mm



SKIRTING BOARD KTEX 10
MDF

10 × 58 × 2,400 mm



SKIRTING BOARD KTEX 11
MDF, for attachment system

21 × 70 × 2,400 mm



SKIRTING BOARD KTEX 12
MDF, for attachment system

15*/19.5** × 50 × 2,400 mm



SKIRTING BOARD KTEX 13
MDF, for attachment system

16 × 58 × 2,600 mm



SKIRTING BOARD KTEX 14
MDF, for attachment system

17 × 70 × 2,600 mm



SKIRTING BOARD KTEX 15
MDF

16 × 80 × 2,600 mm



SKIRTING BOARD KTEX 16
MDF

15 × 78 × 2,400 mm



SKIRTING BOARD KTEX 17
MDF

18 × 40 × 2,400 mm



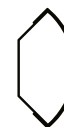
SKIRTING BOARD KTEX 18
MDF, for attachment system

13.5*/19* × 40 × 2,400 mm



SKIRTING BOARD KTEX 19
MDF, for attachment system

18 × 90 × 2,400 mm



SKIRTING BOARD KTEX 20
MDF

17 × 17 × 2,400 mm



SKIRTING BOARD KTEX 21
MDF

12 × 12 × 2,400 mm



SKIRTING BOARD KTEX 22
MDF

16 × 16 × 2,400 mm



SKIRTING BOARD KTEX 23
MDF

6 × 25 × 2,600 mm



SKIRTING BOARD KTEX 24
MDF

4 × 45 × 2,400 mm

* Covered distance from wall w/o clips.

** Covered distance from wall with clips.

Different quantities available by prior arrangement.

Insulation underlays



BASIC

Foam-based

25,000 × 1,000 × 2 mm

1 PACK 4 rolls = 100 m²

1 PALLET 40 rolls



BASIC PLUS

Foam-based with flat laminated PE foil

25,000 × 1,000 × 2 mm

1 PACK 4 rolls = 100 m²

1 PALLET 40 rolls



PREMIUM SOUND

PU-based with foil lamination

8,500 × 1,000 × **1.8 mm**

1 PACK 1 roll = 8.5 m²

1 PALLET 40 rolls

Meets the minimum
requirements for collections
with abrasion class 33. ✓



SUPERIOR SOUND

PU-based with foil lamination

5,500 × 1,000 × **2.8 mm**

1 PACK 1 roll = 5.5 m²

1 PALLET 40 rolls

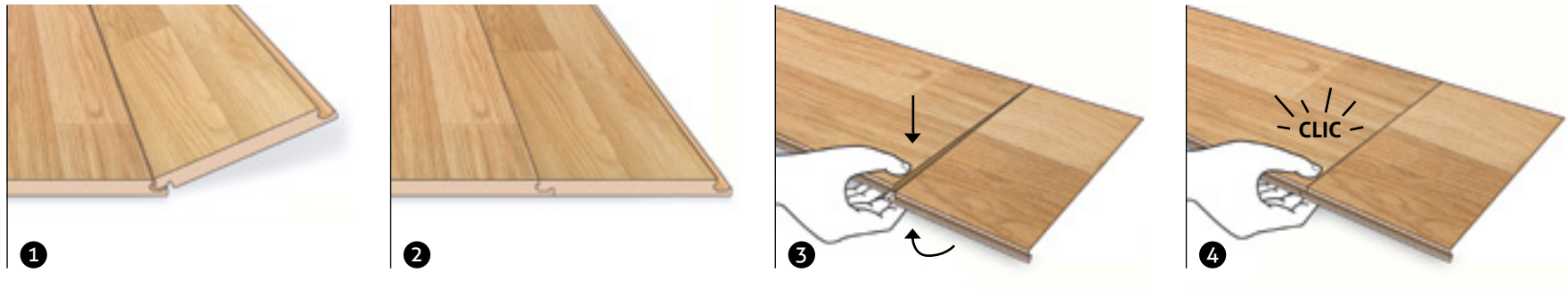
Meets the minimum
requirements for collections
with abrasion class 33. ✓

Panel construction

The panels for our laminate flooring are made up of at least four sturdy layers. These guarantee the durability and excellent quality of MY FLOOR. This is how we create long-lasting floors for all requirements.



- A** The upper surface of the flooring features a particularly wear-resistant overlay protection film.
- B** The overlay protection film is pressed together with the individual, hardened decorative film to form a hard-wearing surface.
- C** The base layer is a wood fibreboard.
- D** On the underside of the base board, a moisture-resistant stabilisation film ensures the structural stability of the MY FLOOR laminate flooring.



The CLIC system makes laying this floor child's play: with just one finger, panels lock audibly into place. Simply unpack, lay, click and finish – without the least exertion or any additional tools.

- ✓ even easier to lay
- ✓ 50% time saving
- ✓ no hammer, push block or pull bar required
- ✓ safe and robust
- ✓ can be walked on immediately

For more laying tips, we recommend our YouTube videos at ► video.my-floor.com



AC 5/32

AC 5/33

A laminate floor's resistance to wear is given as an abrasion class, e.g. AC 5. Here, the number 5 indicates that it will not show signs of abrasion for a considerable length of time. The wear class figure indicates the level of use for which the laminate is suitable. 32 represents average commercial use and 33 is for heavy commercial use.

Floors with these symbols have the following properties:



These panels have a 45° bevelled edge all the way round. Putting them together creates a V-shaped groove, which replicates the character of natural wooden floorboards.



These panels have a special surface structure.



Decors with this symbol are antistatic.



Decors with this symbol have got a special Moisture Guard.

Outstanding features of all MY FLOOR products:



All floors use the CLIC system. Simple to lay with no need for a hammer, tapping block and crowbar. Safe and stable, you can walk on them right away.



Safe and stable, you can walk on them right away.



Low flammability.



Easy-care and durable.



Highly resistant to cigarette butts.



Not light-sensitive.



Stain-resistant.



Resistant to wear.



Made from natural, renewable materials.



Comfortable to walk on.

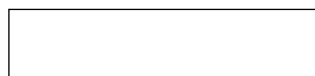


Suitable for use over underfloor heating.

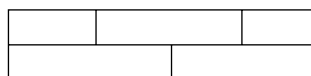


Hard-wearing and pressure resistant.

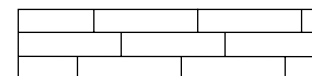
Layout of the surfaces:



1-Strip



2-Strip



3-Strip

Lodge

8 mm | AC 5/32

Dimensions: 1,380 mm x 193 mm

Panels per carton: 8 = 2.131 m²

Cartons per pallet: 56 = 119.32 m²

5G

CLIC SYSTEM

COTTAGE

8 mm | AC 5/32

Dimensions: 1,380 mm x 193 mm / 244 mm

Panels per carton: 8 = 2.131 m² / 2.694 m²

Cartons per pallet: 56 = 119.32 m² /
42 = 113.138 m²

5G

CLIC SYSTEM

V4

Chalet

10 mm | AC 5/33

Dimensions: 1,380 mm x 193 mm

Panels per carton: 6 = 1.589 m²

Cartons per pallet: 56 = 89.49 m²

5G

CLIC SYSTEM

V4

Villa

12 mm | AC 5/33

Dimensions: 1,375 mm x 188 mm

Panels per carton: 5 = 1.293 m²

Cartons per pallet: 56 = 72.38 m²

5G

CLIC SYSTEM

V4

Residence

10 mm | AC 5/33

Dimensions: 1,845 mm x 244 mm

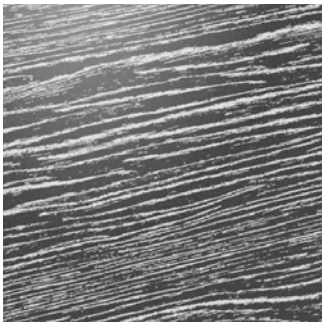
Panels per carton: 4 = 1.80 m²

Cartons per pallet: 42 = 75.6 m²

5G

CLIC SYSTEM

V4



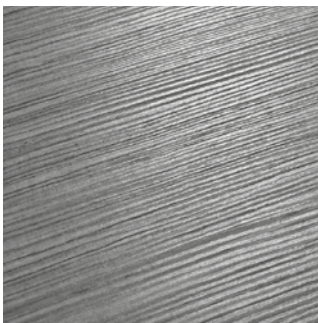
AF AUTHENTIC FLOOR
naturally living wood structures



ER REGISTERED EMBOSS
genuine wood appearance due to consistence between pattern and embossing



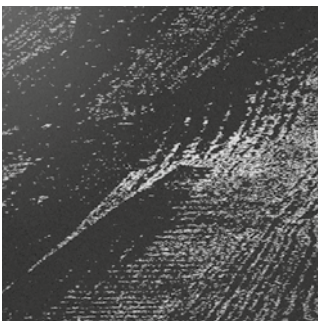
ML MATT LOOK
with a waxed look & feel



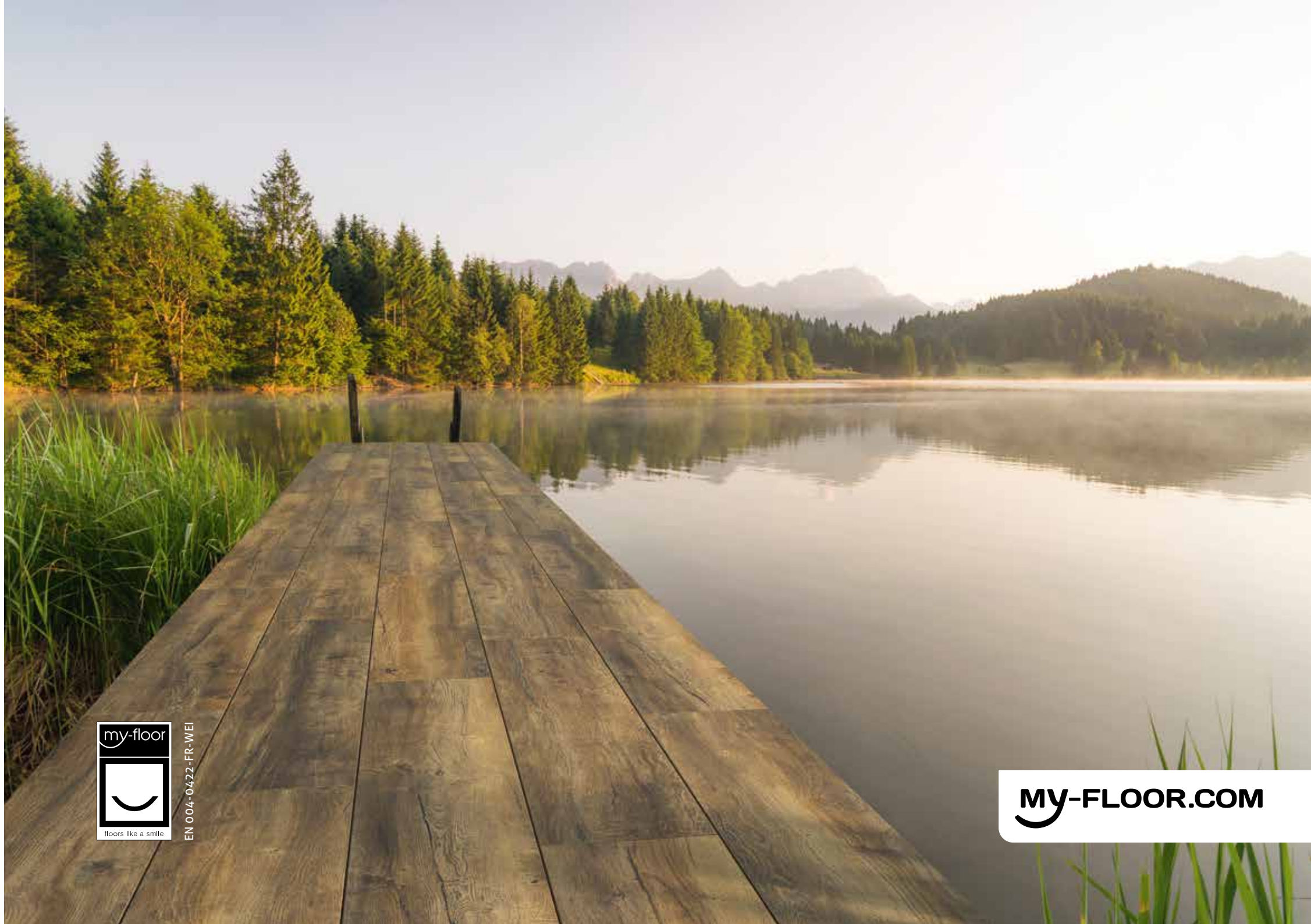
MX MATRIX
deep structure embossing with typical wood matt/gloss contrast



ND NATURAL DEEP
Natural depth with a convincing feel



UL USED LOOK
with apparently signs of wear and tear



EN 004-0422-FR-WEI